



# THREATS TO CONSERVATION LANDS

---

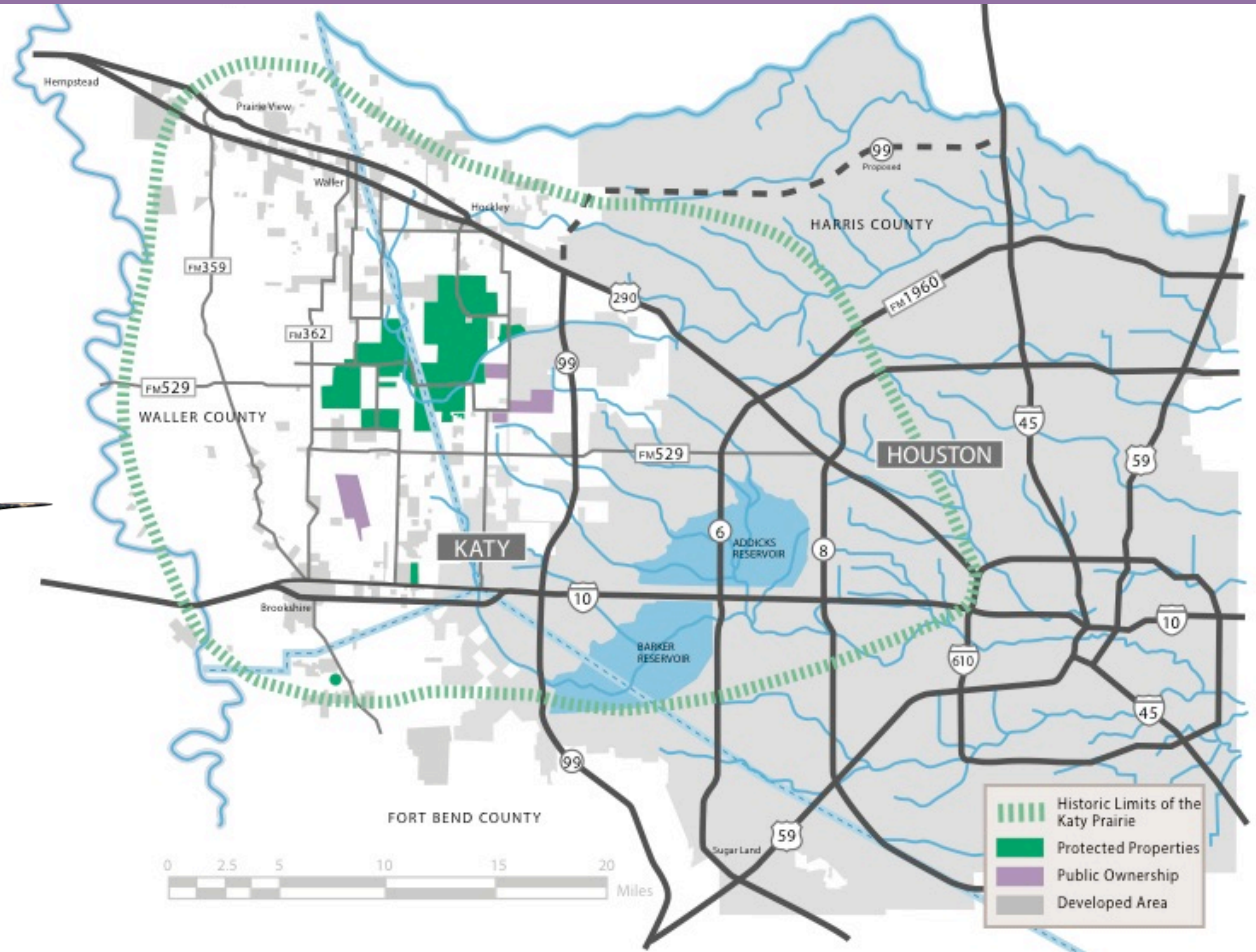
Mary Anne Piacentini, Executive Director  
Katy Prairie Conservancy



# WHAT IS THE KATY PRAIRIE?

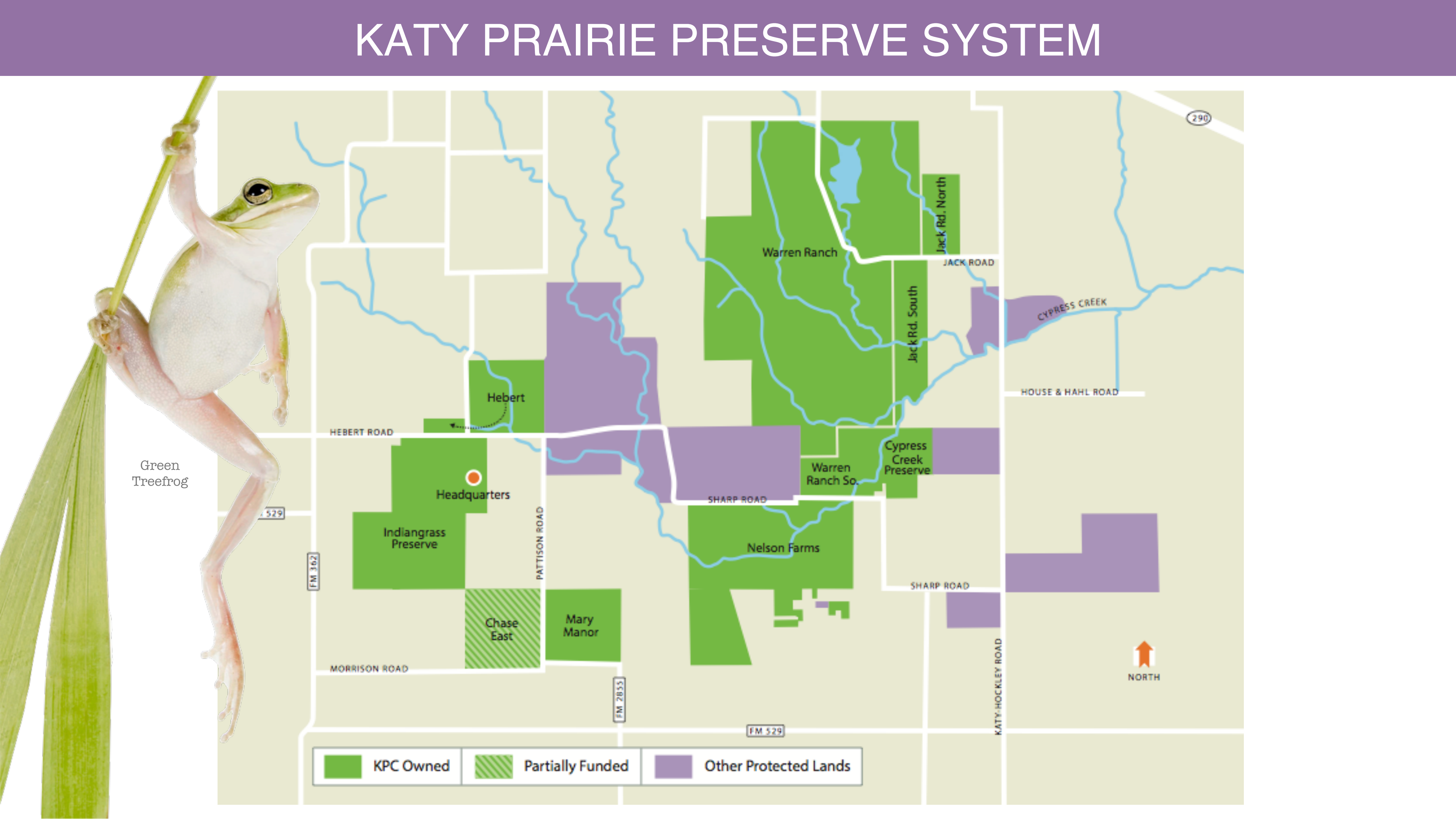


Ruby-throated  
Humming Bird



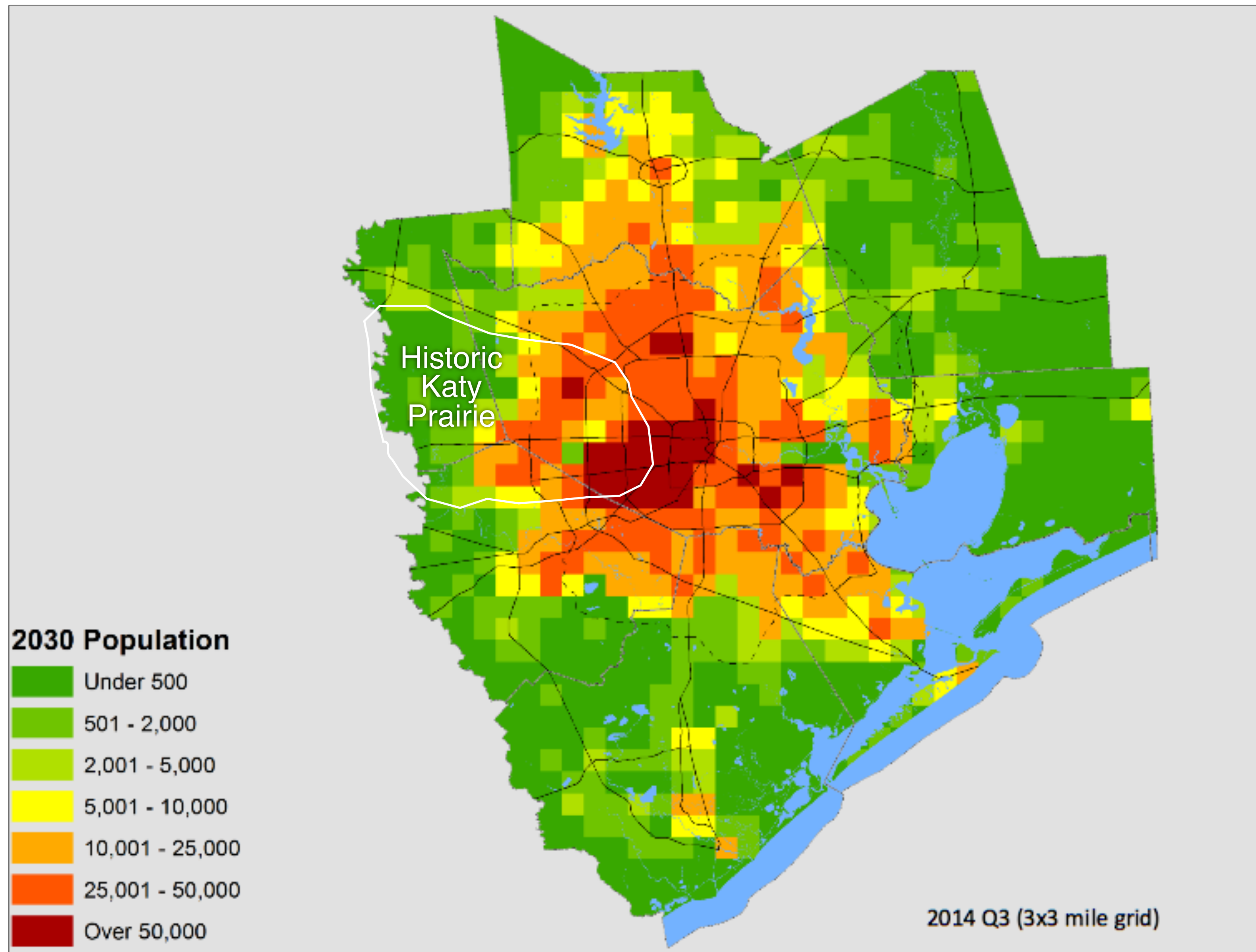


# KATY PRAIRIE PRESERVE SYSTEM





# GROWTH OF THE REGION



Population Changes: 1980 - 2040

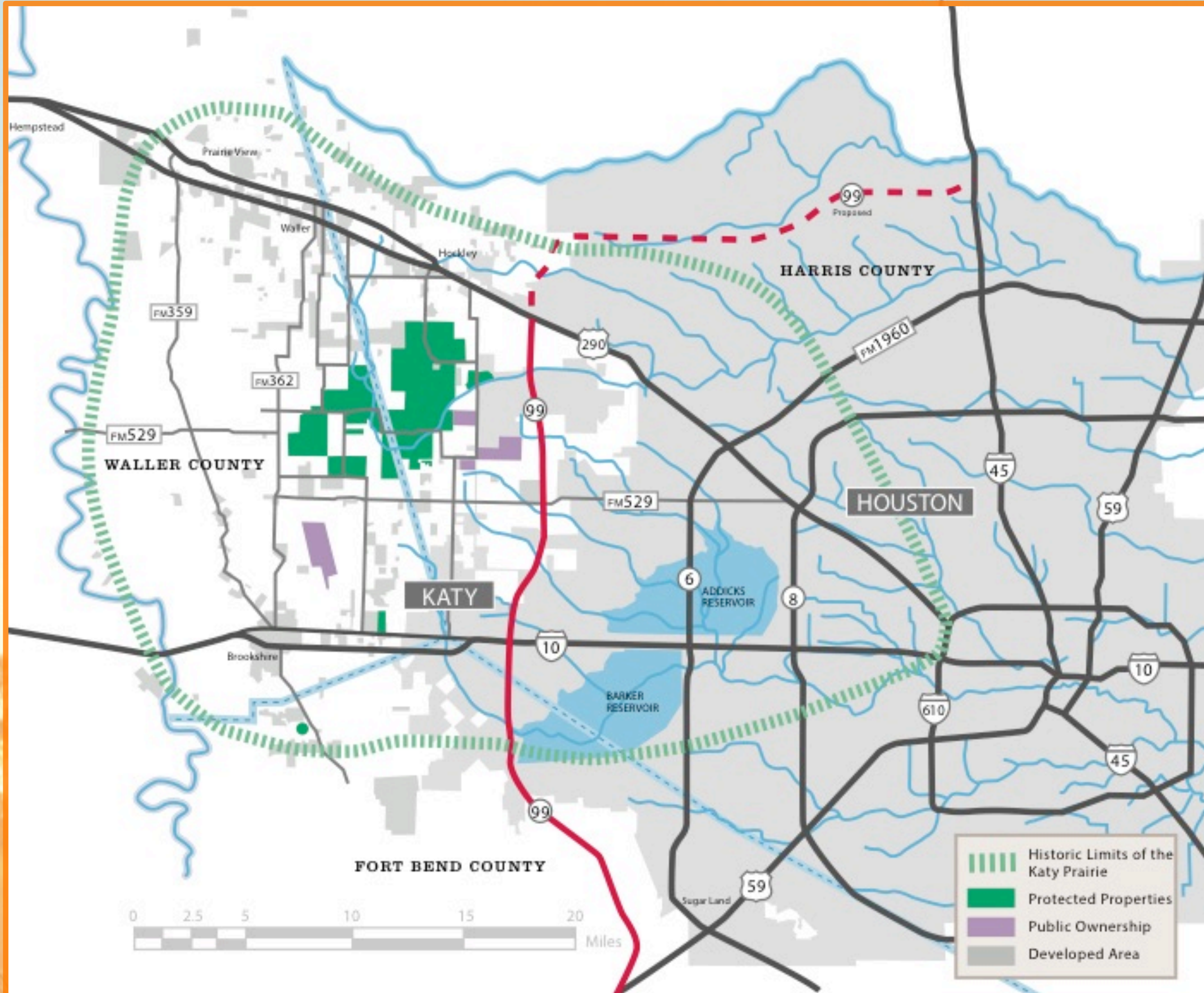




# THREATS TO THE KATY PRAIRIE

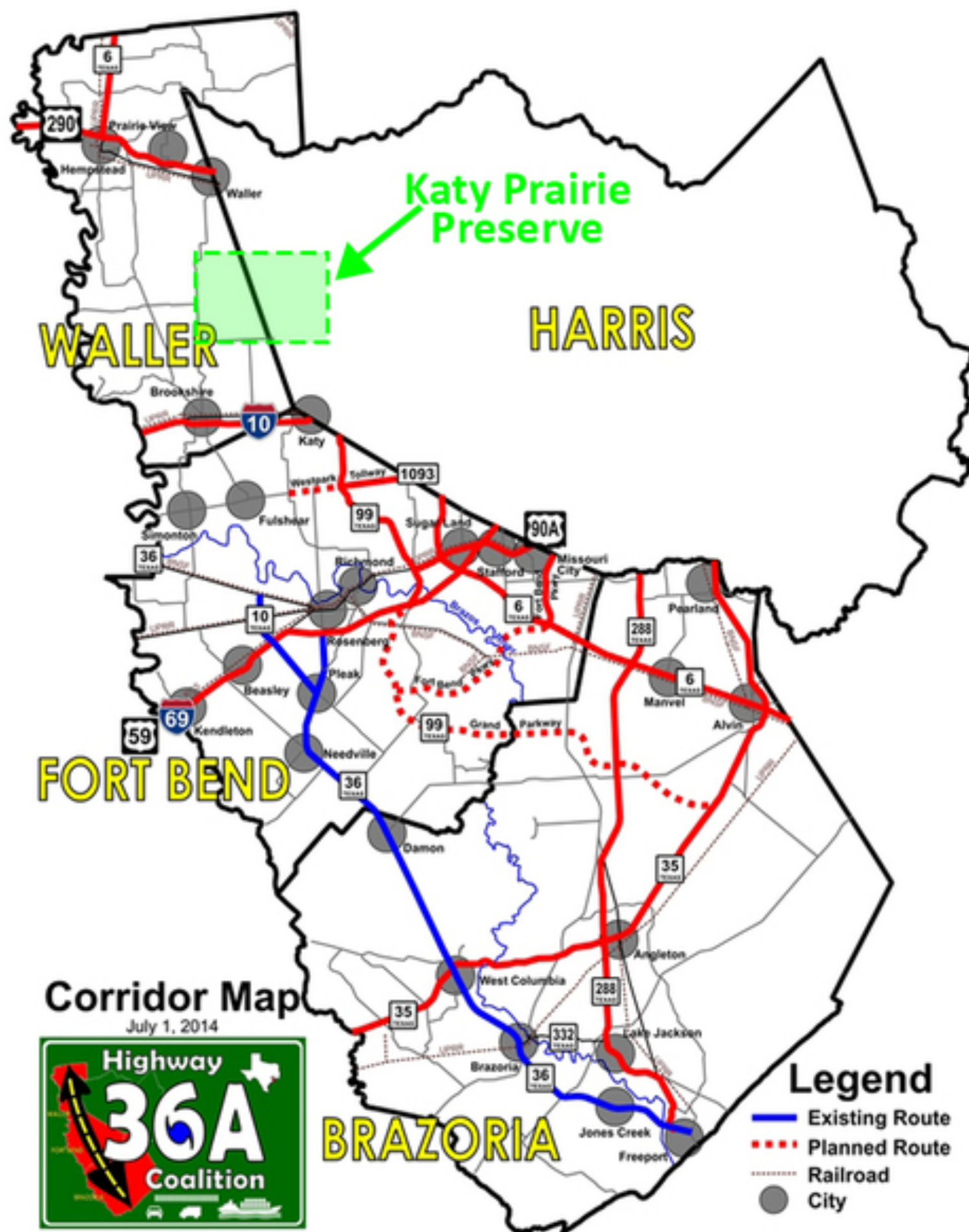
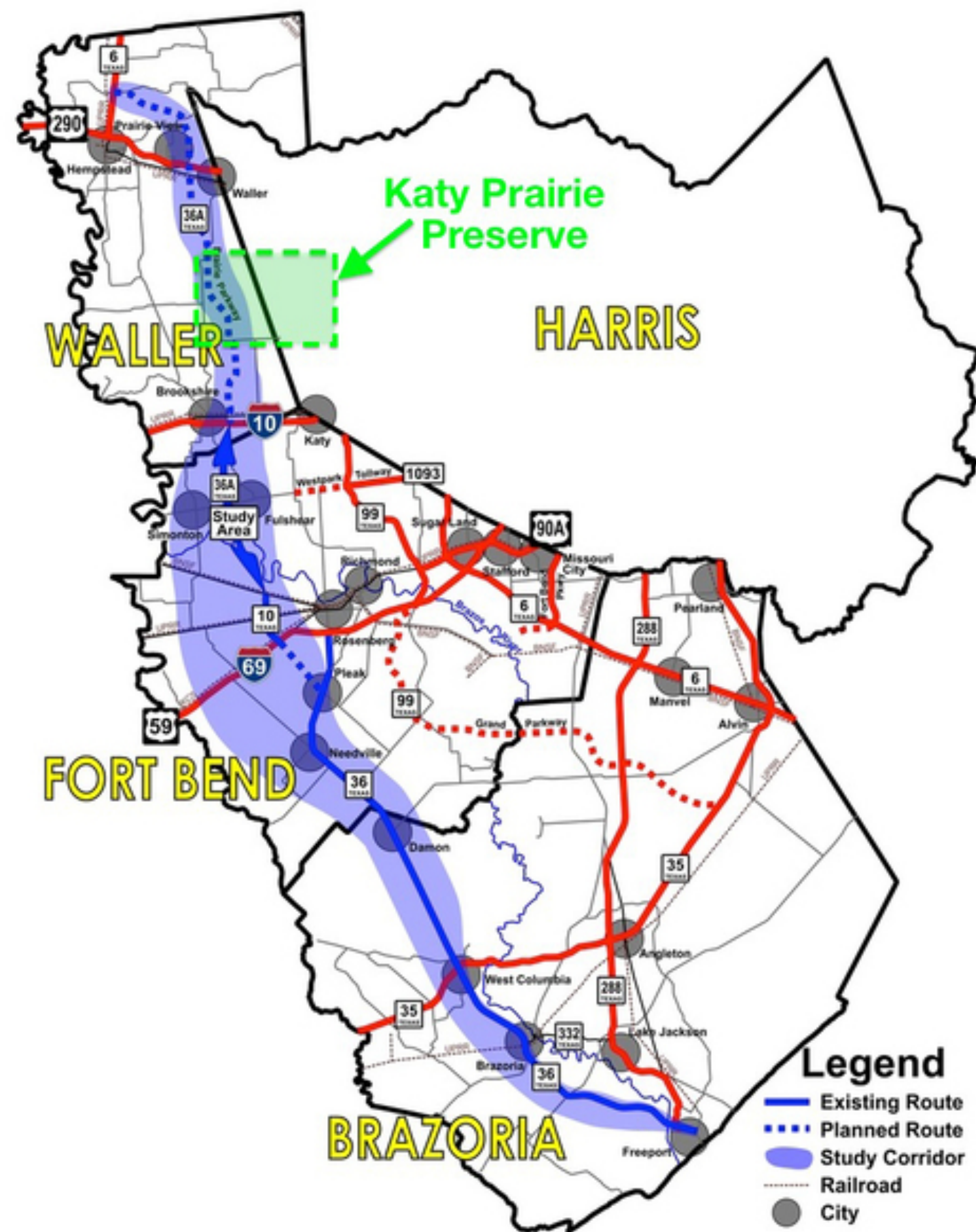


# THREAT: GRAND PARKWAY





# THREAT: HIGHWAY 36A



## Brookshire, TX



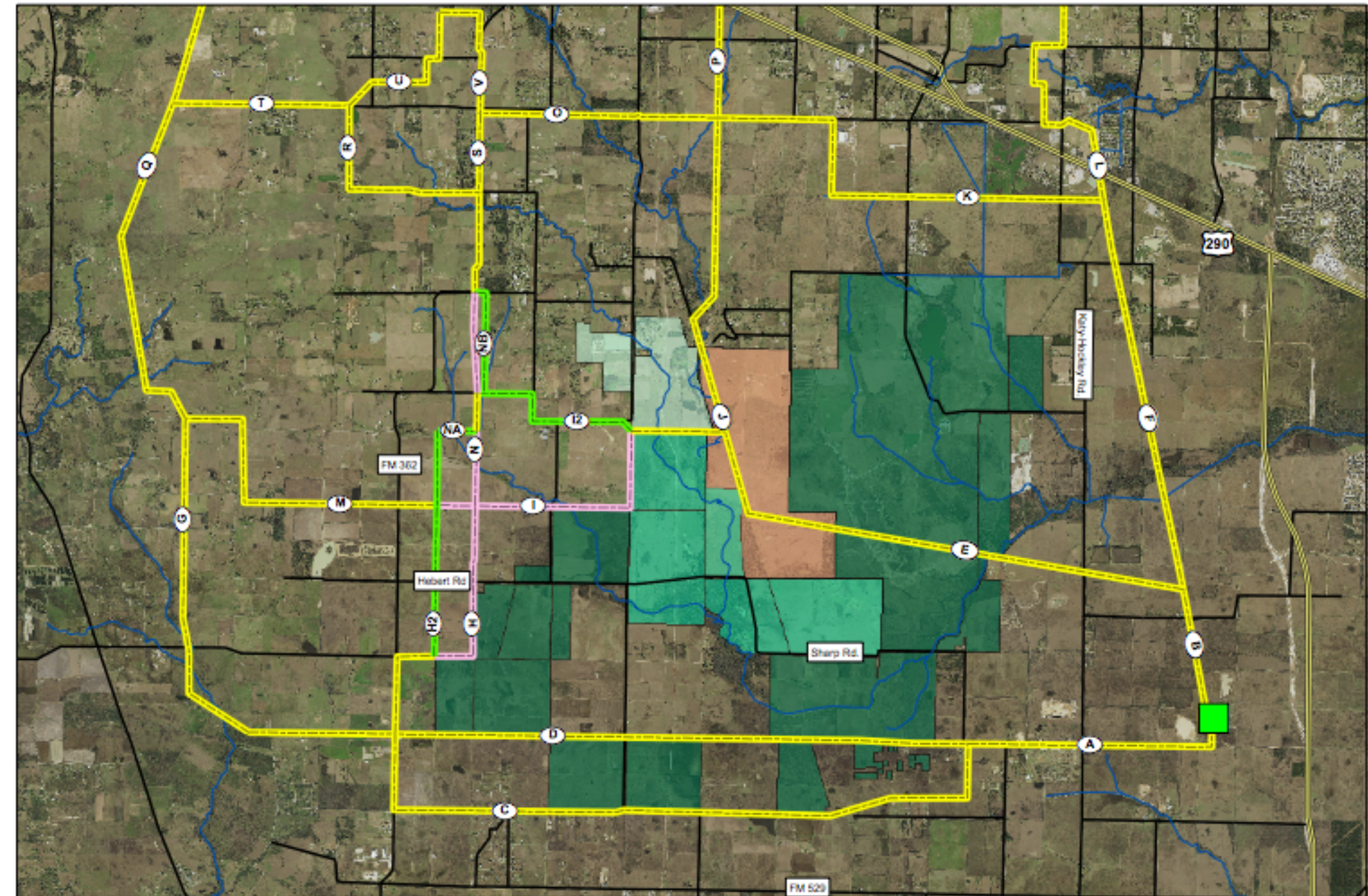
## Hempstead, TX



# THREAT: BRAZOS VALLEY POWERLINE



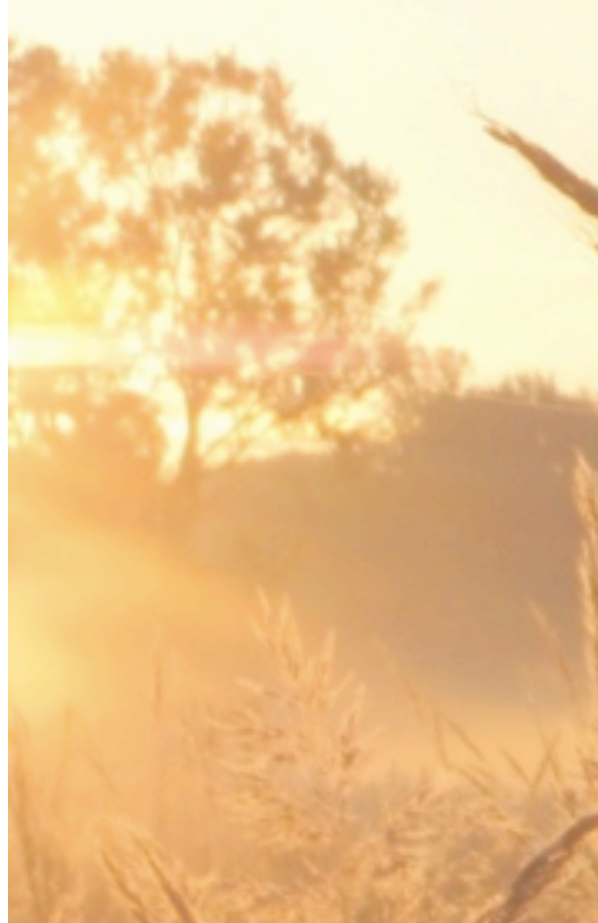
High-capacity power lines



Potential Pathways



# THREAT: TEXAS CENTRAL RAILWAY

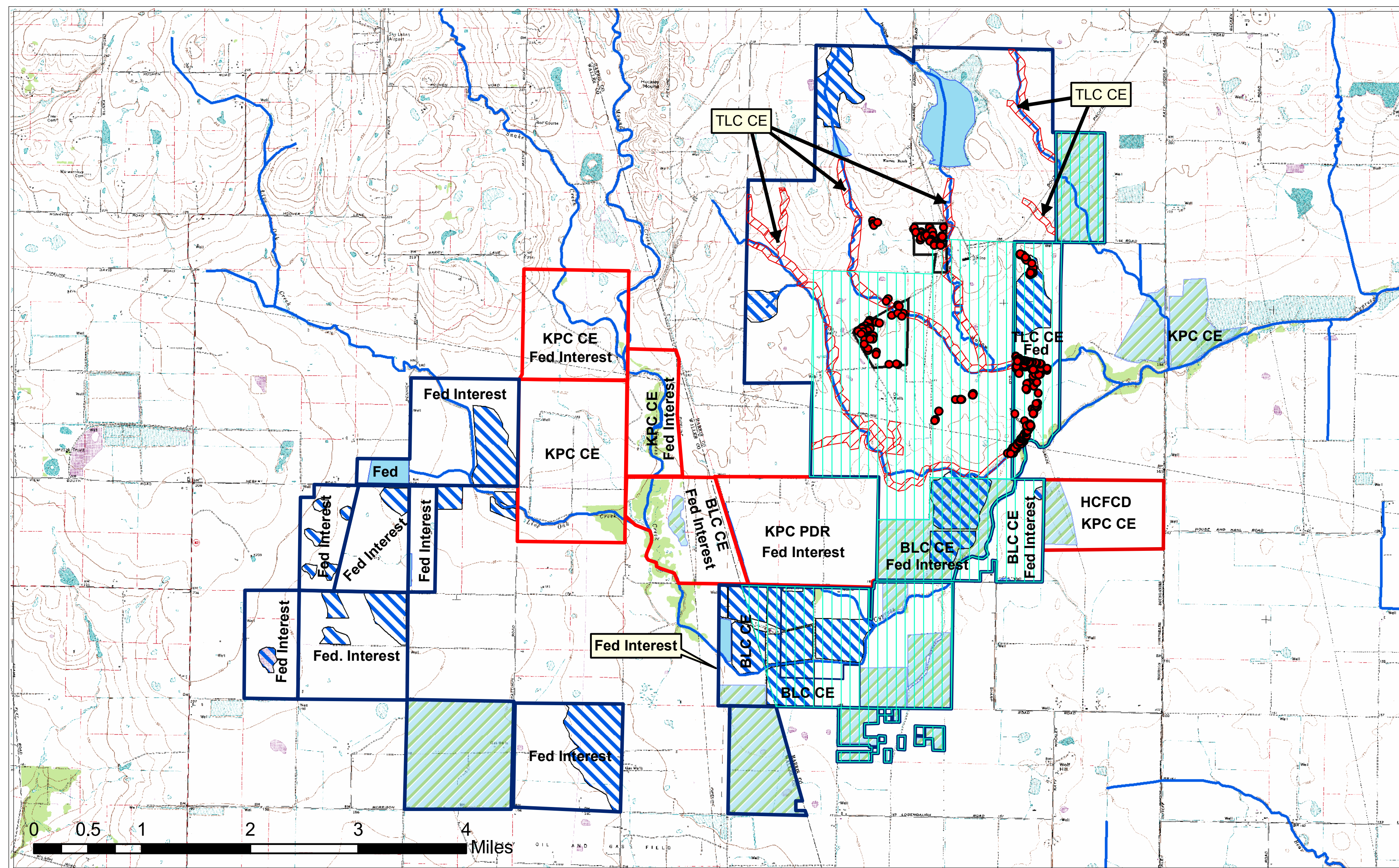


## High Speed Rail



## Proposed Routes



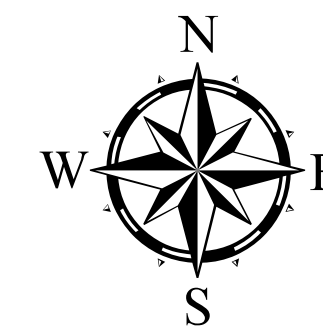


## KPC Land Use

- Legend:

  - Katy Prairie Stream Mitigation Bank
  - Wetland Mitigation
  - Federally Funded Wetland Projects
  - Endangered Sp. TX Prairie Dawn
  - Texas Prairie Dawn Mitigation Area
  - HCFCF Flood Easement
  - KPC Properties
  - Other Protected Lands
  - Reservoirs

Wetland Mitigation and Stream Mitigation Bank are all under Section 404 of the US Clean Water Act. Texas Prairie Dawn is a Federally Listed Endangered Species





# WILDLIFE ON THE KATY PRAIRIE



RARE CRAWFISH FROG



ENDANGERED TEXAS PRAIRIE DAWN



NORTHERN HARRIER:  
A MIGRATORY BIRD

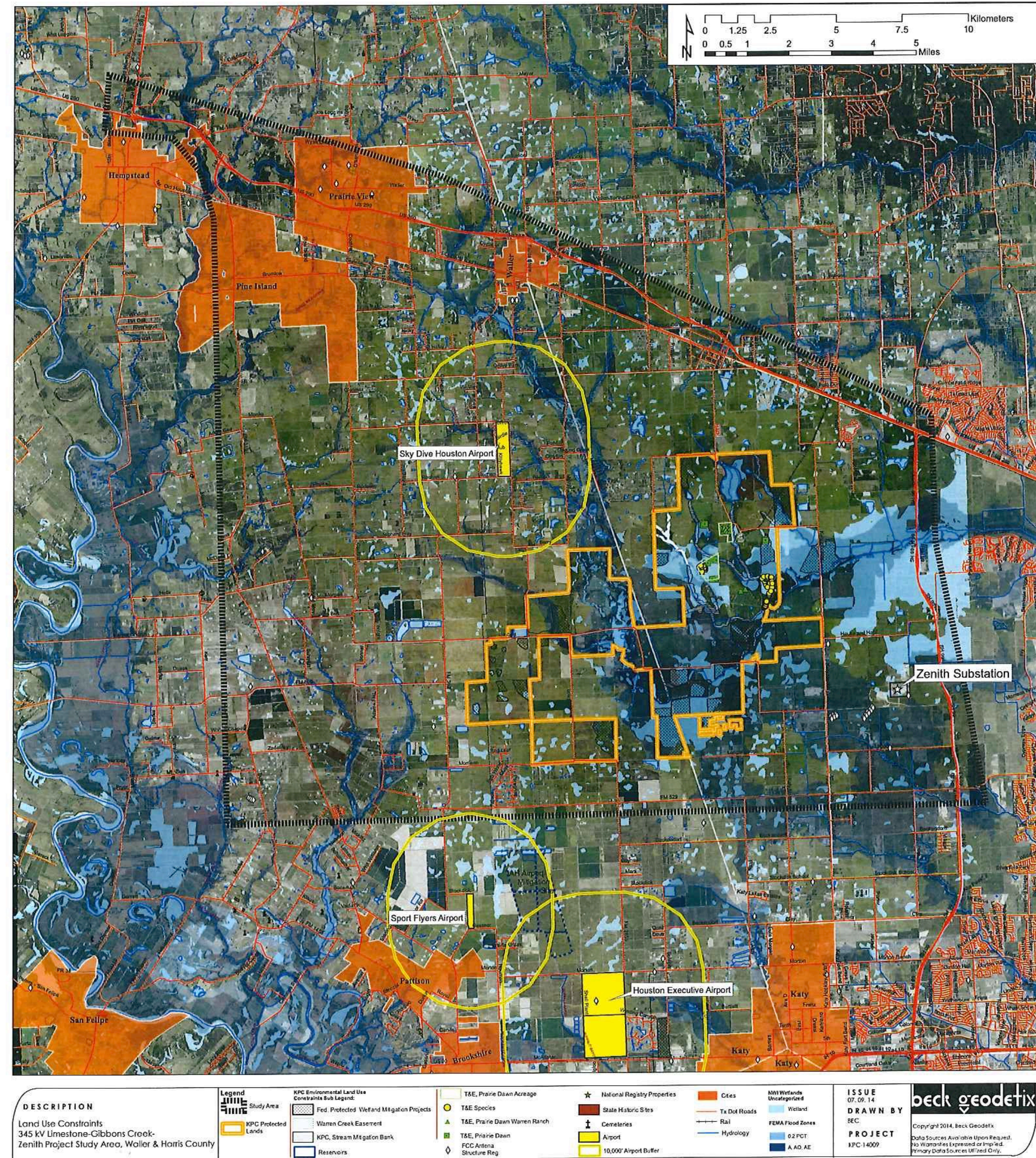


# IMPORTANT BIRD AREA



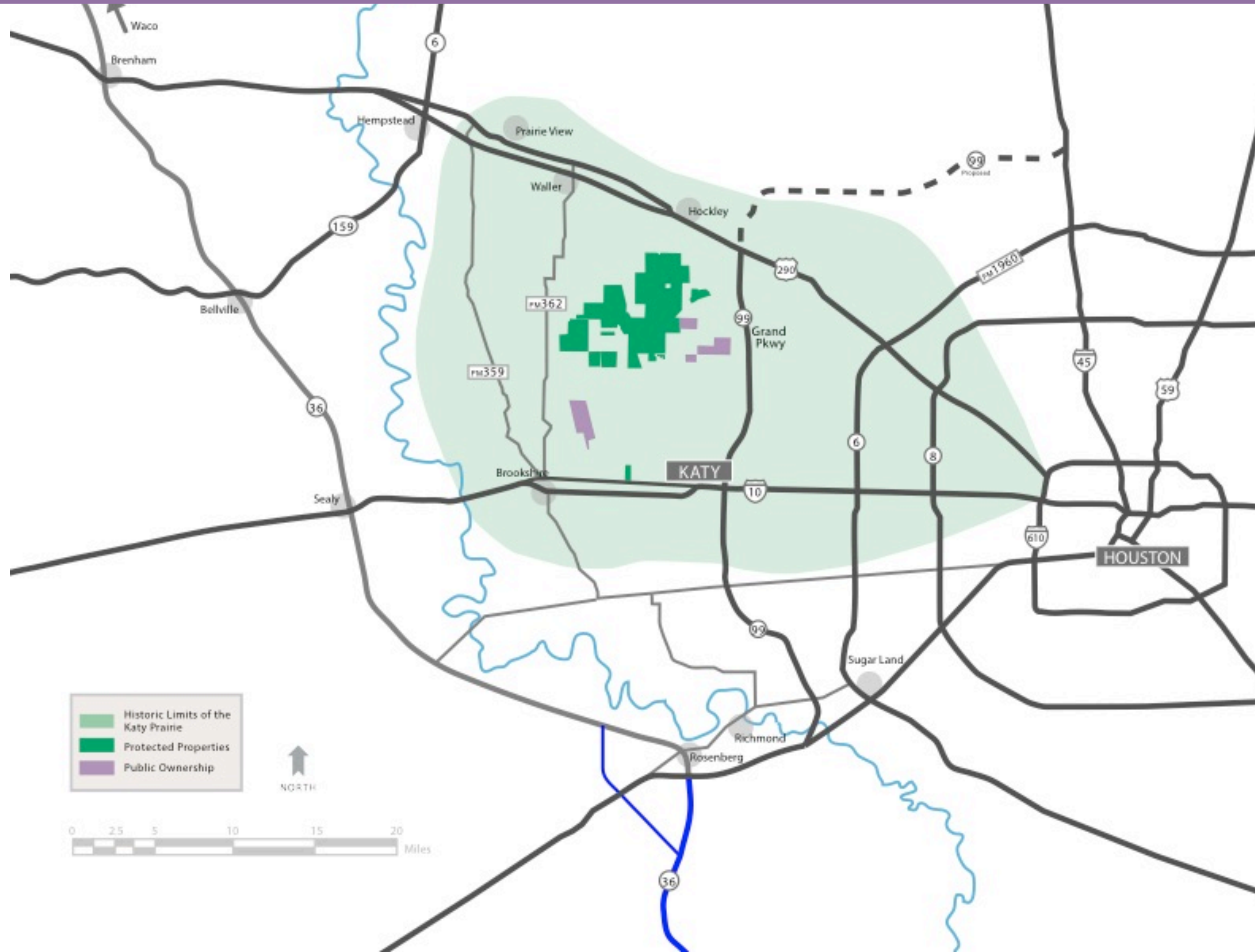


# MAP



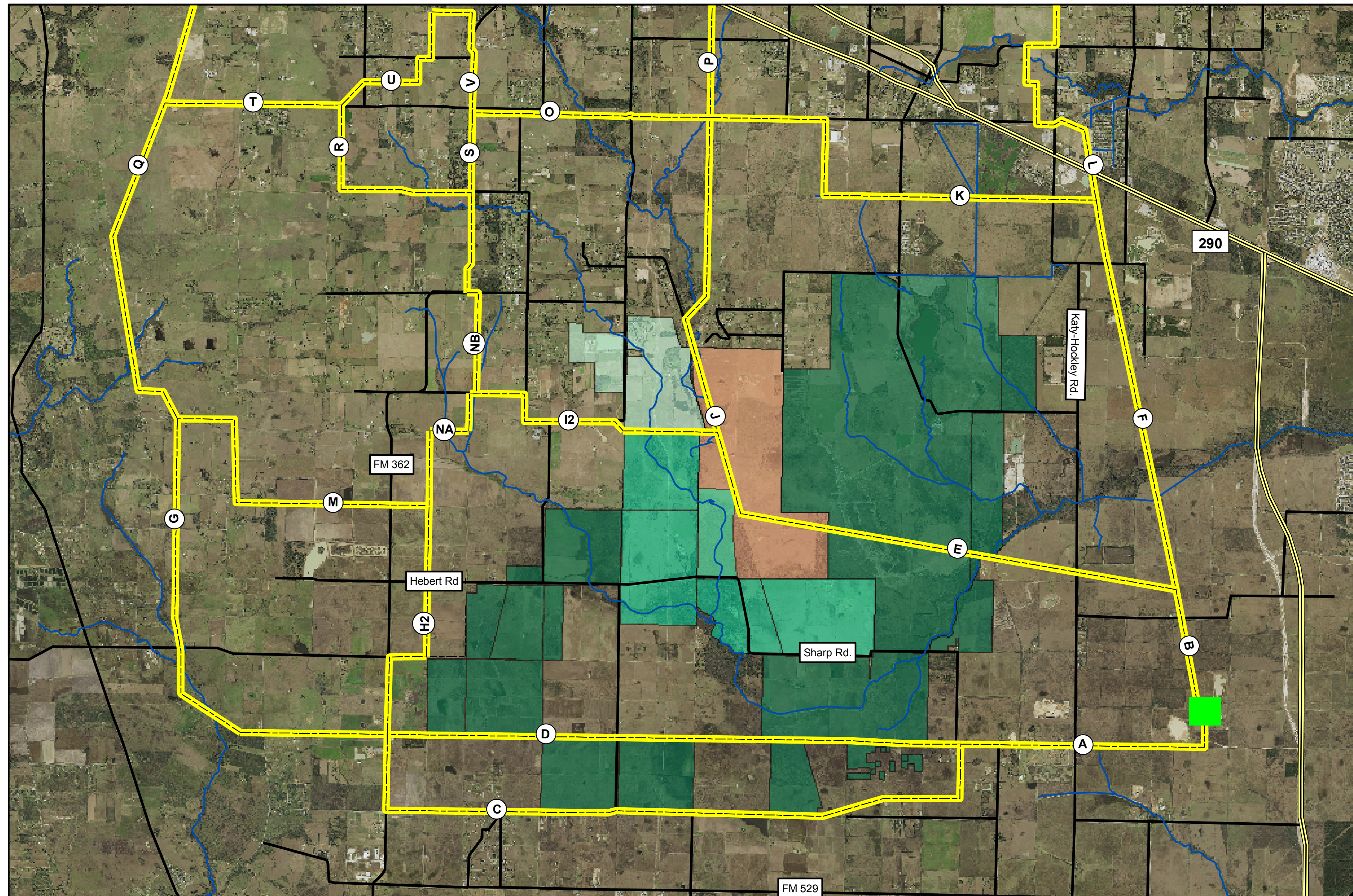


# HIGHWAY 36A





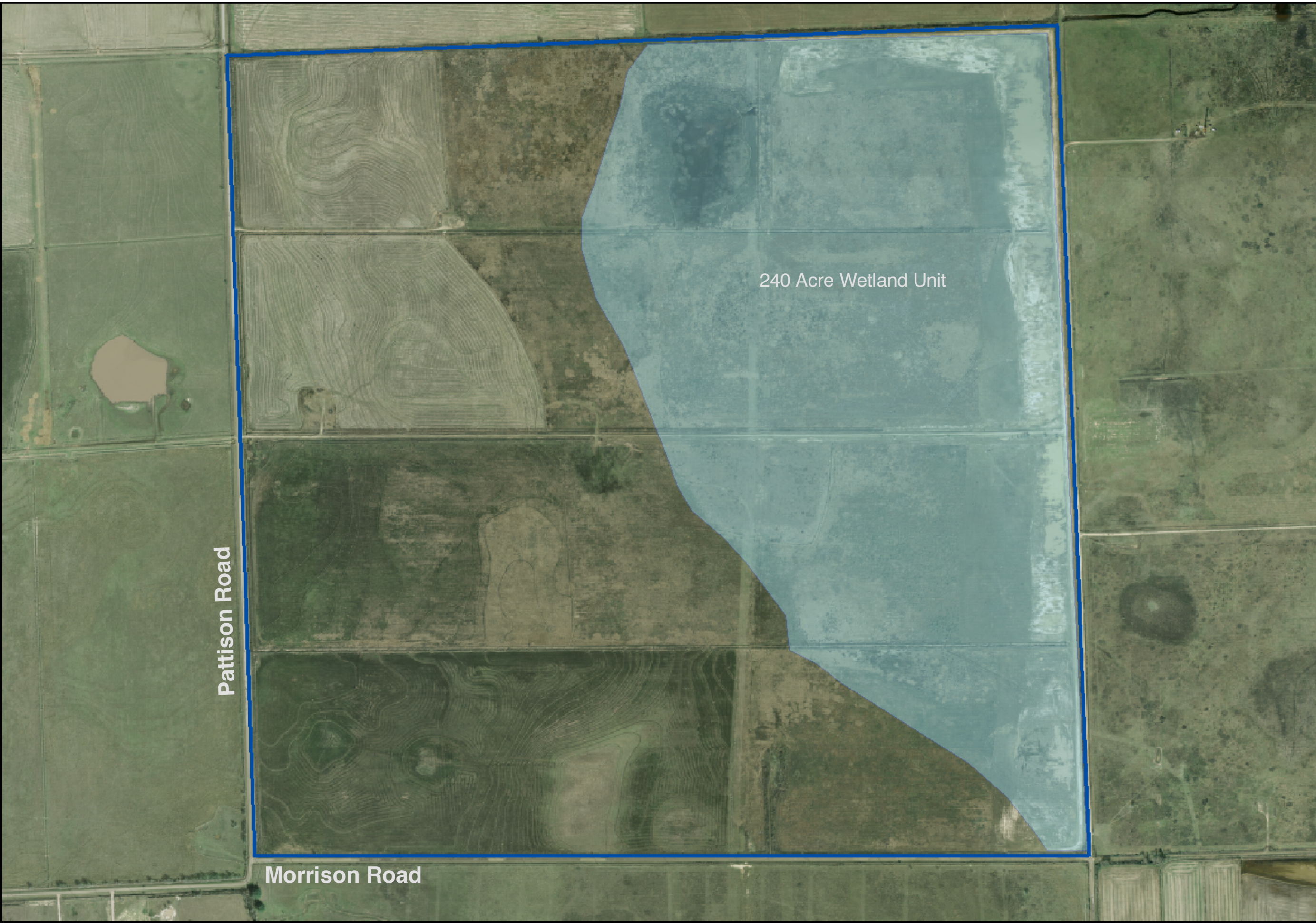
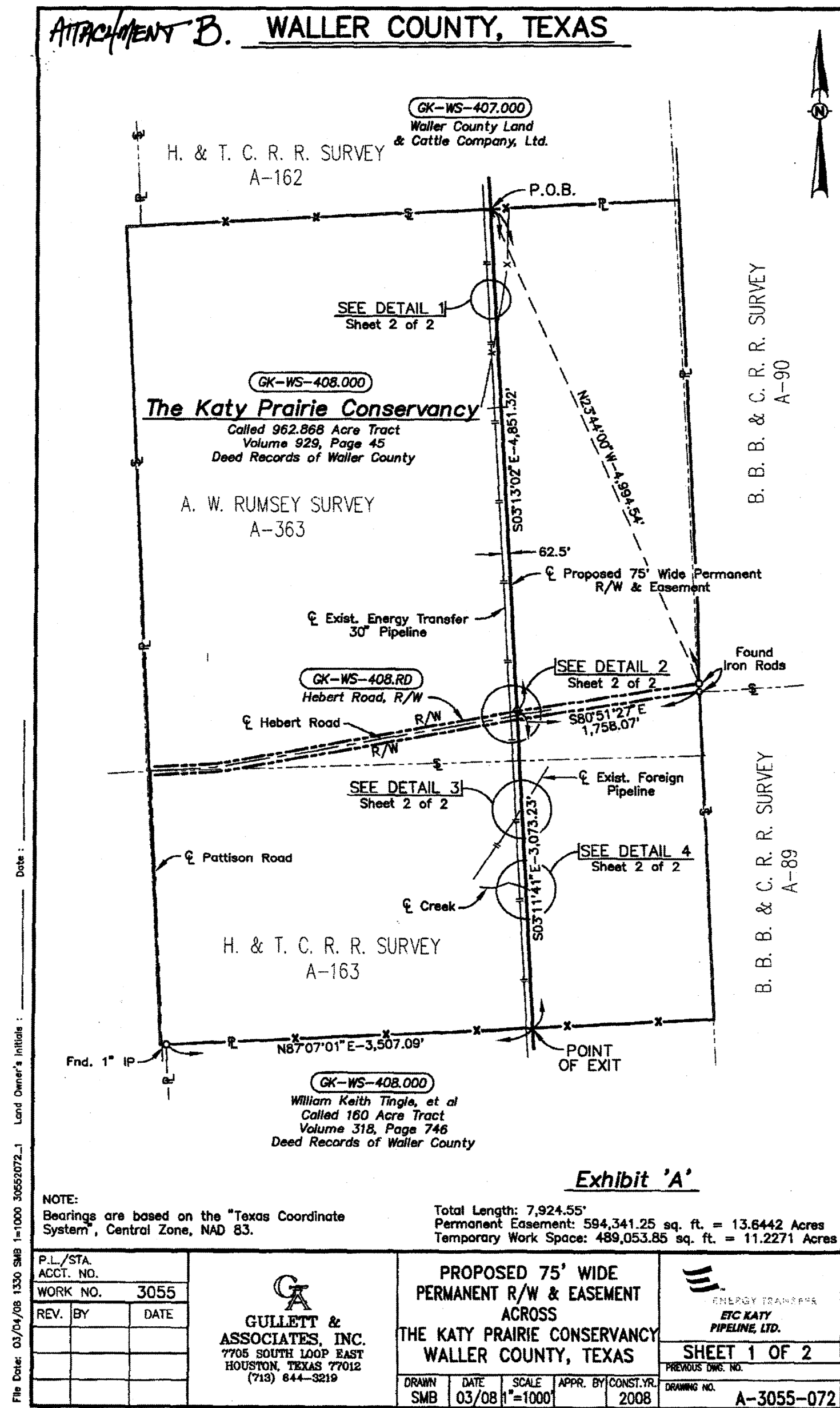
# BRAZOS VALLEY CONNECTION



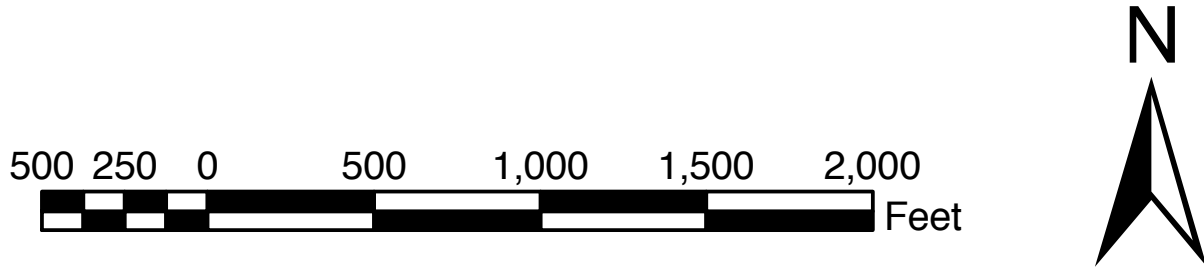
----- Proposed Transmission Lines



# PIPELINES



Manor Section





# PUBLIC MEETINGS

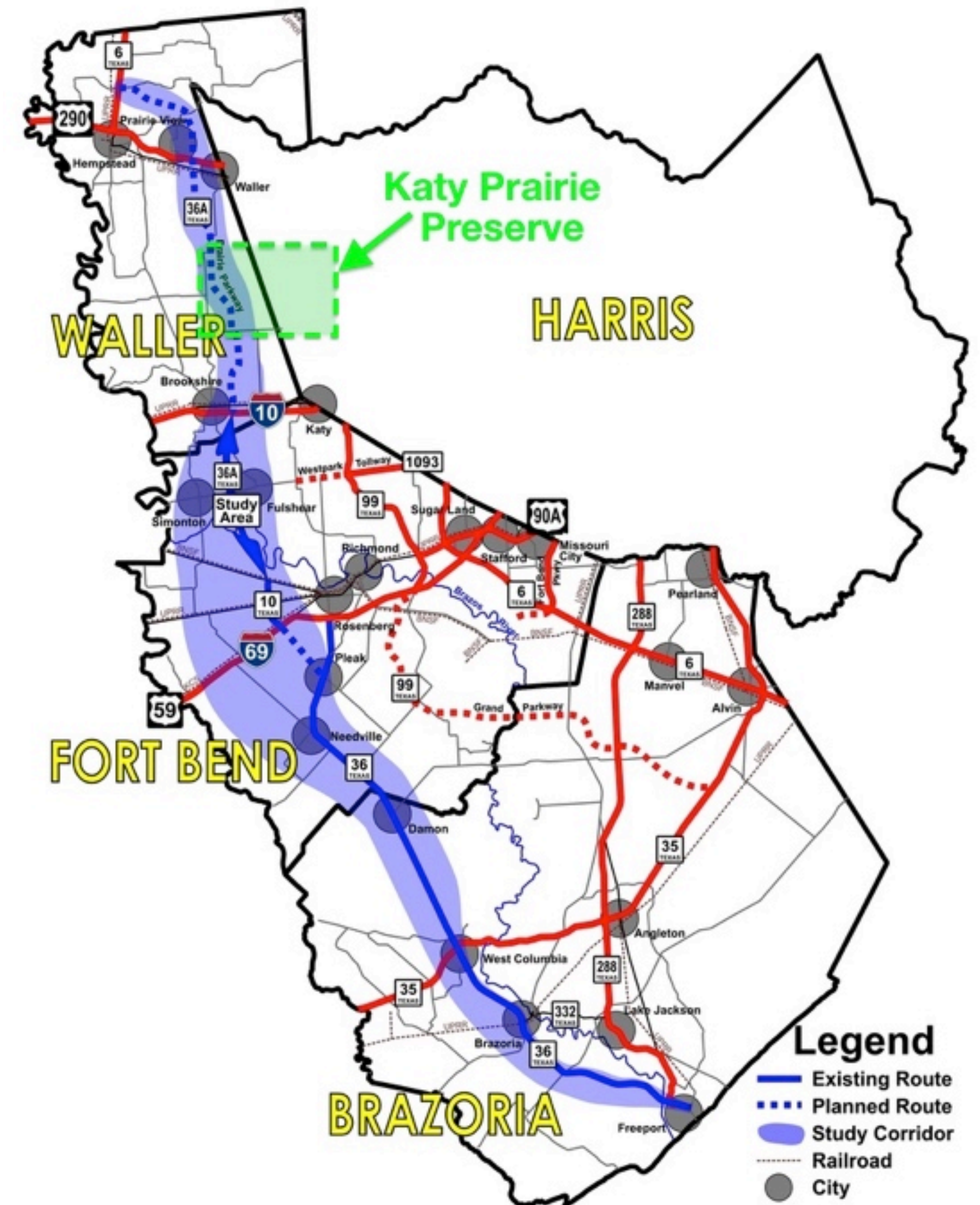
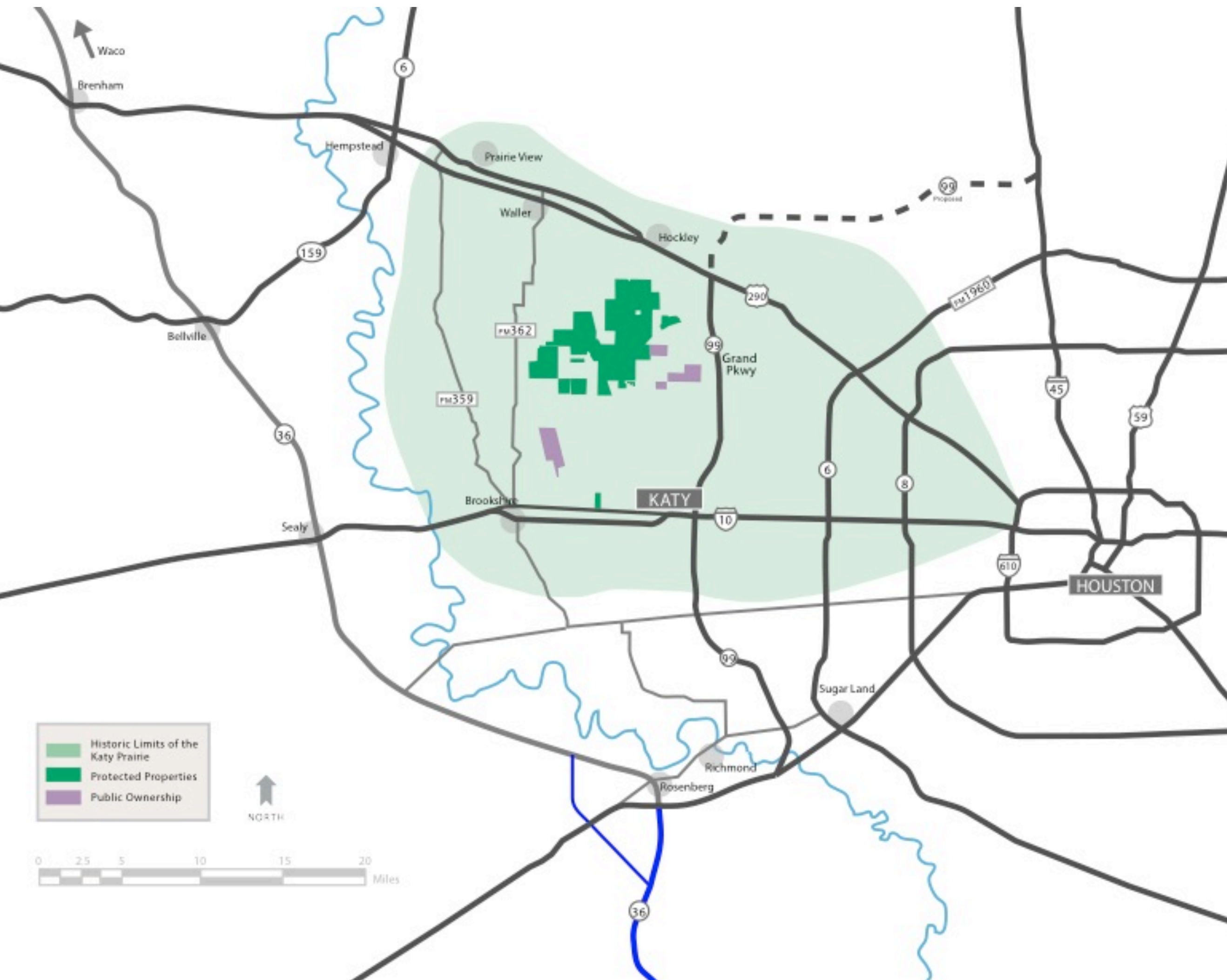








# HIGHWAY 36A





# BRAZOS VALLEY CONNECTION

## CenterPoint Energy to host Public Meetings for the proposed Brazos Valley Connection Project

CenterPoint Energy will hold public open house meetings at the following dates, times and locations: 1) Tuesday October 21, 2014, from 6:30 p.m. to 9:30 p.m. at Waller High School, located at 20950 Field Store Road in Waller, TX 77484; 2) Thursday October 23, 2014, from 5:00 p.m. to 8:00 p.m. at the Berry Center, located at 8877 Barker Cypress Road in Cypress, TX 77433; and 3) Thursday November 6, 2014, from 5:00 p.m. to 8:00 p.m. at the Grimes County Expo Center, located at 5220 F.M. 3455 in Navasota, TX 77868. The purpose of the public meetings is to share information as well as gather input from the public on the yet-to-be-determined route for the Brazos Valley Connection Project, a proposed 345 kV transmission line in Harris, Waller and Grimes Counties. The proposed transmission line is required to maintain transmission grid reliability and improve the capability to import power into the Houston Region. The proposed construction includes a 345 kV double-circuit transmission line connecting the existing Zenith Substation located in northwest Harris County to the existing Gibbons Creek Substation located in northwest Grimes County.

The map to the right illustrates the proposed Preliminary Transmission Line Segments. All of the proposed preliminary segments shown on the map are under consideration at this time; however, not all of the segments will be constructed. The Public Utility Commission of Texas will determine the final route in a proceeding to consider an Application for a Certificate of Convenience and Necessity that will be filed by CenterPoint Energy.

Information stations with representatives from CenterPoint Energy and environmental specialists from POWER Engineers, Inc. will be available to share information about the need for the transmission project, the type of structures proposed for the new transmission line, construction methods to be used, and transmission right-of-way requirements. A questionnaire will be provided by the Company for individuals to complete regarding their preferences and to provide comments. Refreshments will be provided.

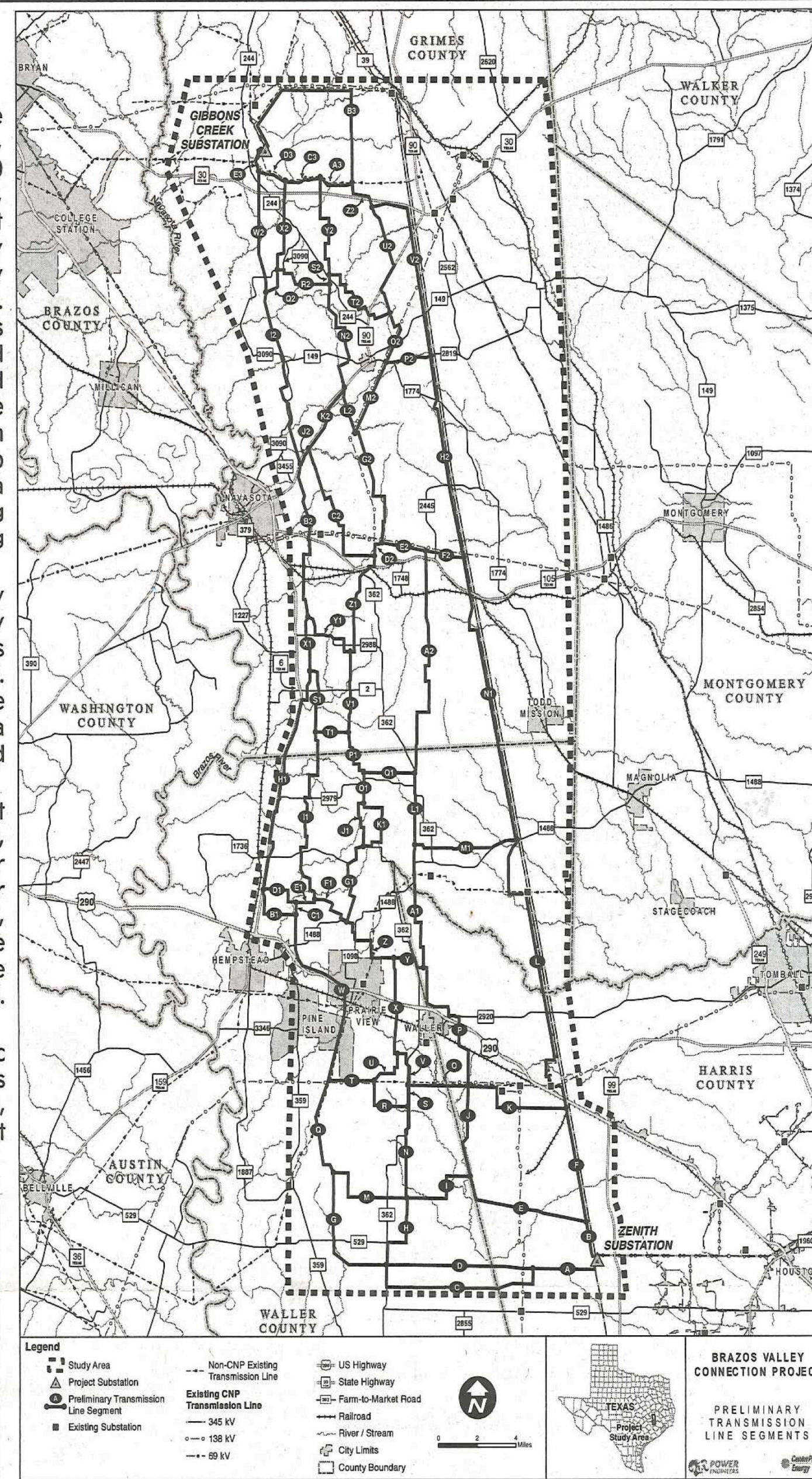
For more information about the proposed project, the public meetings, and a copy of the questionnaire, please visit our Brazos Valley Connection web site at [www.BrazosValleyConnection.com](http://www.BrazosValleyConnection.com), or contact the Brazos Valley Connection team at 1-800-416-9625 or email at [info@brazosvalleyconnection.com](mailto:info@brazosvalleyconnection.com).

### Public Meeting Locations/Dates:

Tuesday, October 21, 2014  
Waller High School  
20950 Field Store Road, Waller, TX 77484 | 6:30 p.m. – 9:30 p.m.

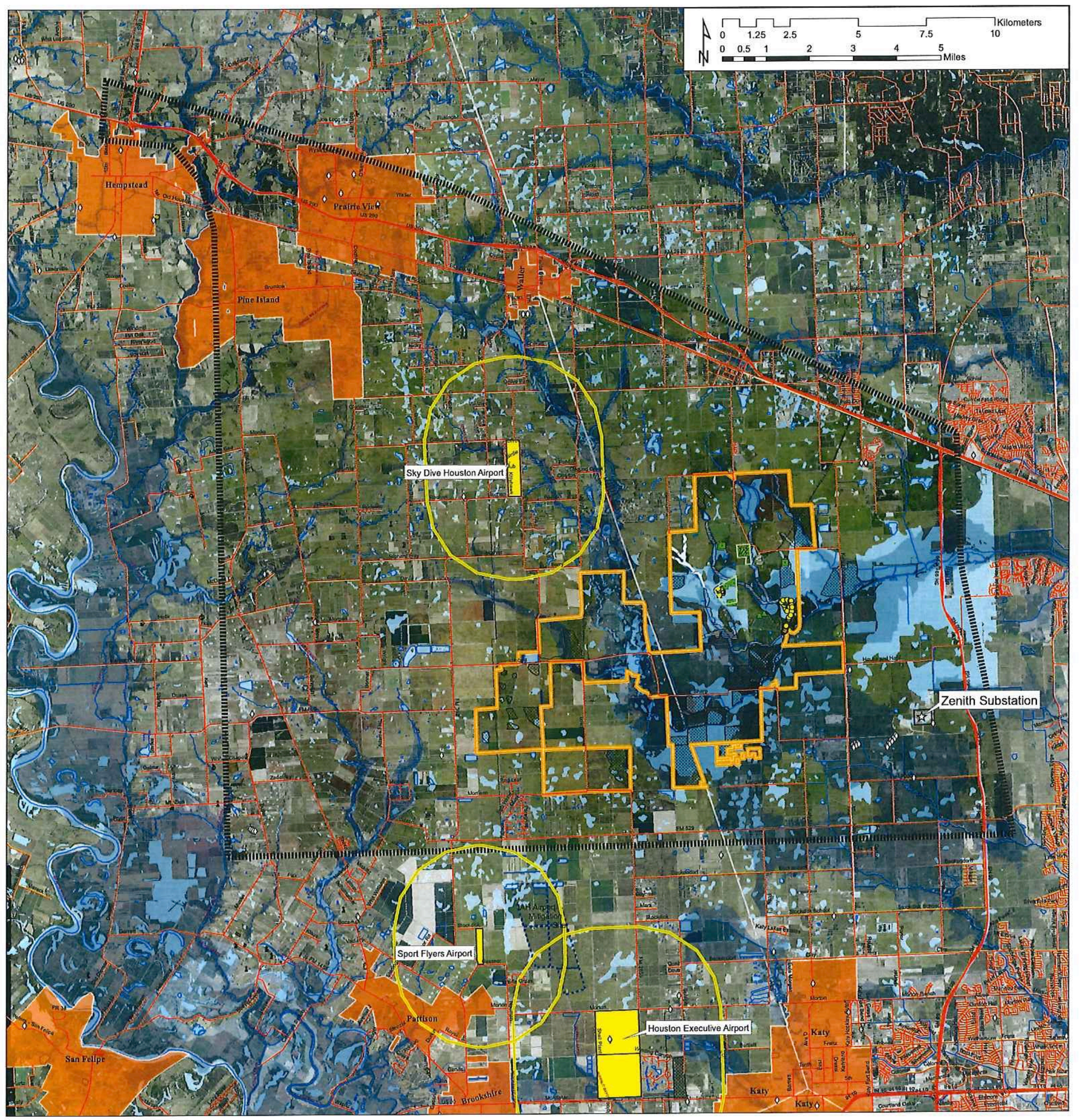
Thursday, October 23, 2014  
Berry Center  
8877 Barker Cypress Road, Cypress, TX 77433 | 5:00 p.m. – 8:00 p.m.

Thursday, November 6, 2014  
Grimes County Expo Center  
5220 F.M. 3455, Navasota, TX 77868 | 5:00 p.m. – 8:00 p.m.





# LAND USE CONSTRAINTS MAP



**DESCRIPTION**

Land Use Constraints  
345 KV Limestone-Gibbons Creek  
Zenith Project Study Area, Waller & Harris County

**Legend**

**Study Area**

- KPC Protected Lands

**KPC Environmental Land Use Constraints Sub-Legend**

- Fed. Protected Wetland Mitigation Projects
- Warren Creek Easement
- KPC Stream Mitigation Bank
- Reservoirs

**T&E, Prairie Dawn Acreage**

- T&E Species
- T&E, Prairie Dawn Warren Ranch
- T&E, Prairie Dawn
- FCC Antenna Structure Reg.

**National Registry Properties**

- Cemeteries
- Airport
- 10,000' Airport Buffer

**Cities**

- City Limits

**Wetlands**

- Wetlands
- FEMA Flood Zones
- 0.2 FCT
- A.A. AE

**Other**

- Tr. Dist. Roads
- Rail
- Hydrology

**ISSUE**  
07.08.14

**DRAWN BY**  
REC.

**PROJECT**  
KPC 14009

**beck geodetix**

Copyright 2014, Beck Geodetix  
Data Sources Available Upon Request.  
No Warranties Expressed or Implied.  
Primary Data Sources Used Only.



# OUTREACH



## DEFENDING THE KATY PRAIRIE

### ISSUES AND ACTIONS

Mary Anne Piacentini, Executive Director  
Jaime González, Con. Education Director



[HOME](#)[THREATS](#)[WHAT'S AT STAKE?](#)[SEE THE PRAIRIE](#)[UPDATES](#)[TAKE ACTION](#)

*Katy Prairie Preserve*

# WILL YOU SAVE IT?

[LEARN MORE](#)



# CALL TO ACTION

12.17.14

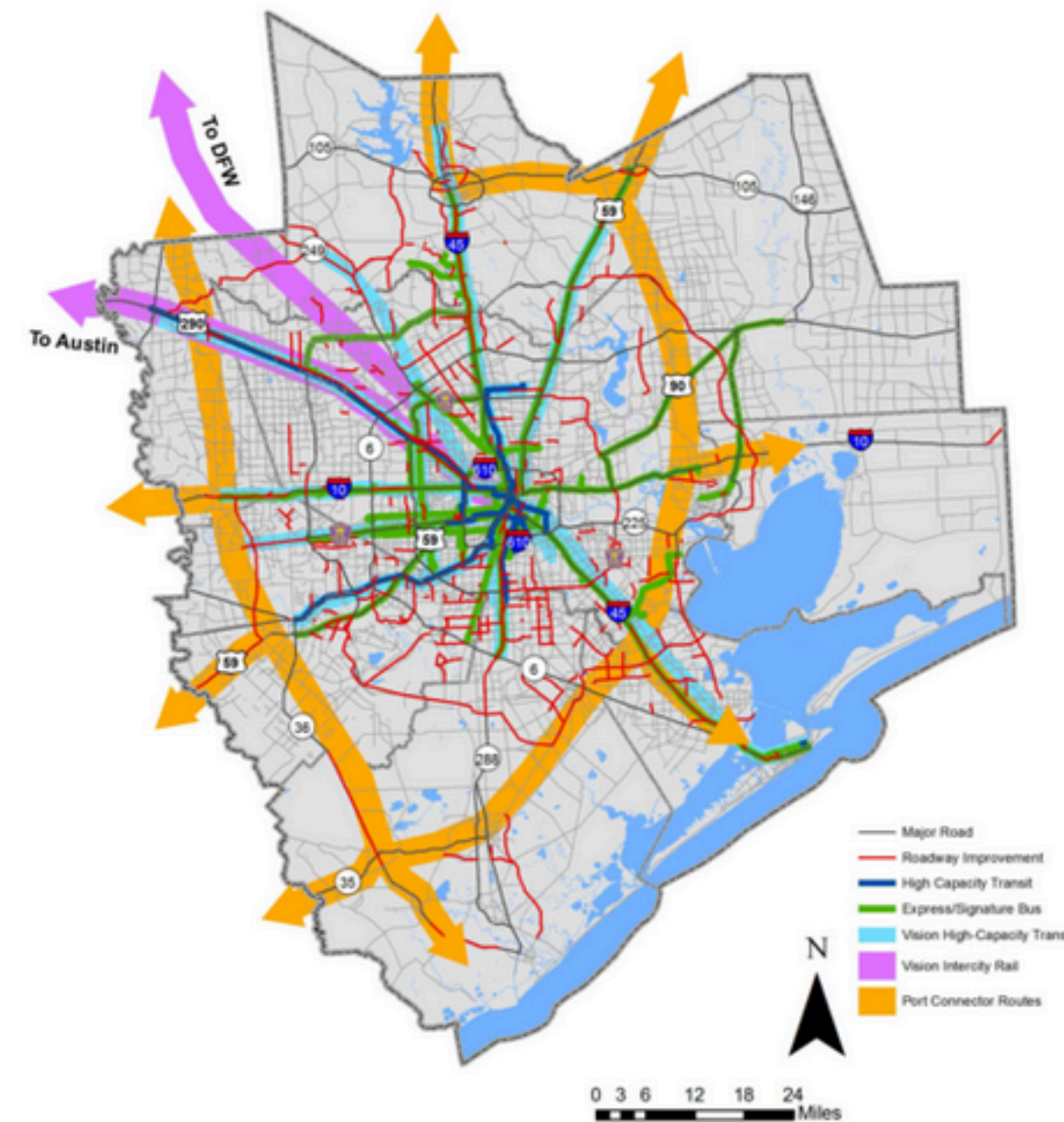
The Houston-Galveston Area Council (H-GAC) is holding meetings to present their 2040 Regional Transportation Plan to the general public. This plan includes a port connector route (Highway 36 and 36A) that would pass near or through Katy Prairie Preserves. The exact routes have not been determined, but we need your help to let them know that a route through or close to our preserves would be detrimental for regional health.

Attend one of the meetings today, December 17th, to learn about the plan in relation to Air Quality, or tomorrow, December 18th, to learn about the plan in relation to the Greater West Houston Mobility Plan.

- Wednesday, December 17 from 12 pm - 1 pm | with Air Quality Conformity Findings  
Houston Galveston Area Council, 3555 Timmons Lane,  
2nd Floor, Room A, Houston, TX 77027
- Wednesday, December 17 from 12 pm - 1 pm | with Air Quality Conformity Findings  
Houston Galveston Area Council, 3555 Timmons Lane,  
2nd Floor, Room A, Houston, TX 77027
- Thursday, December 18 from 6 pm - 8 pm | with Greater West Houston Mobility Plan  
Wolfe Elementary School, 502 Addicks-Howell Rd., Houston, TX 77079

Visit the [H-GAC website](#) to learn more about the plan and make a comment during the Public Comment Period that ends on Friday, January 9, 2015 at 5 pm.

## Future Vision



Source: H-GAC 2040 RTP Draft



Bobcat  
Kitten







# LESSONS LEARNED



American  
Bumblebee

- Point 1
- Point 2
- Point 3
- Point 4
- Point 5



Northern Bobwhite  
Chick and Egg



# LESSONS LEARNED



American  
Bumblebee

- Point 1
- Point 2
- Point 3
- Point 4
- Point 5



Northern Bobwhite  
Chick and Egg