



# The Land – Water Stewardship Connection





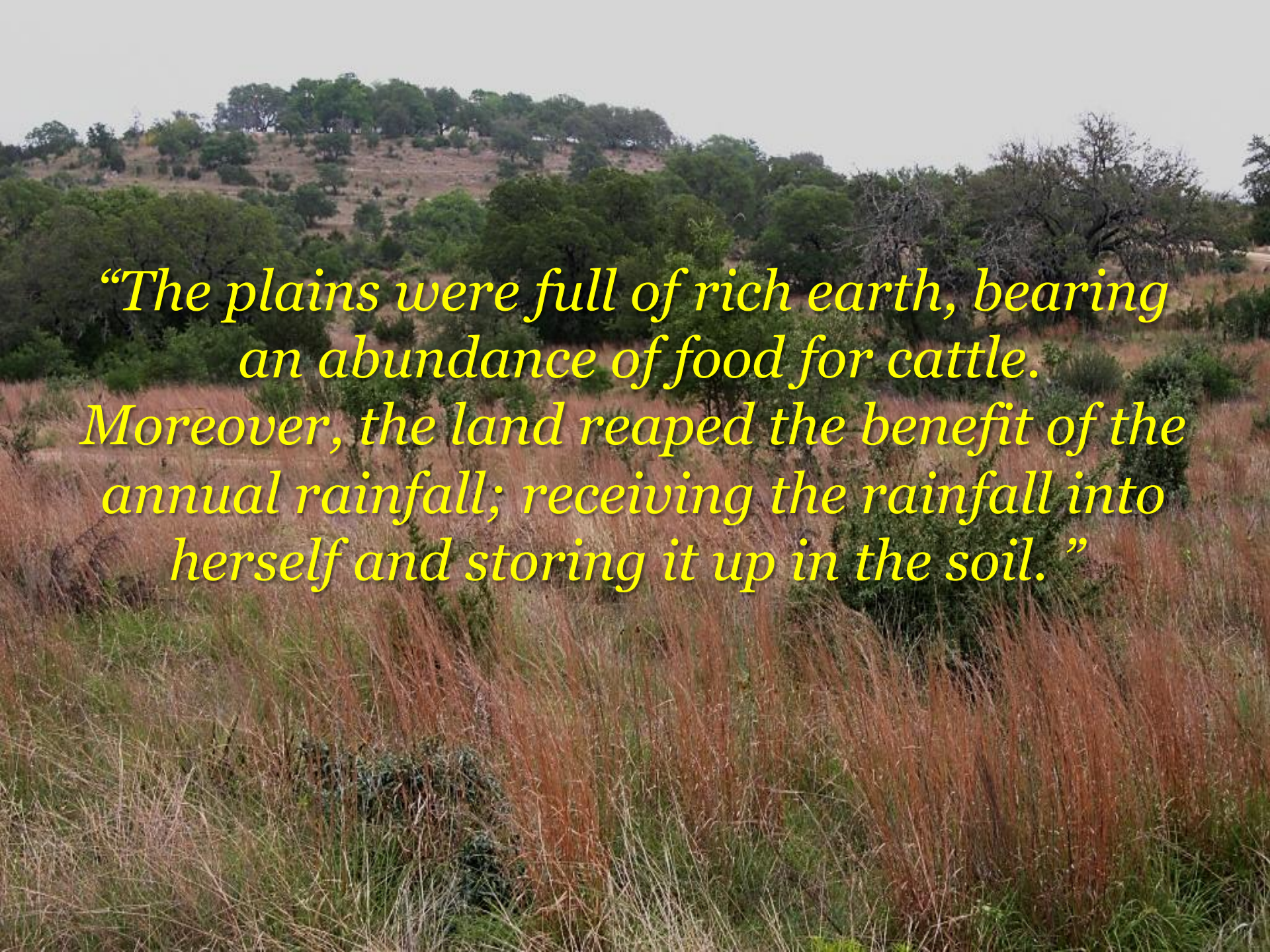
# Land – Water Connection



*“In the primitive state of the country, the mountains and hills were covered with soil and there was an abundance of timber.”*

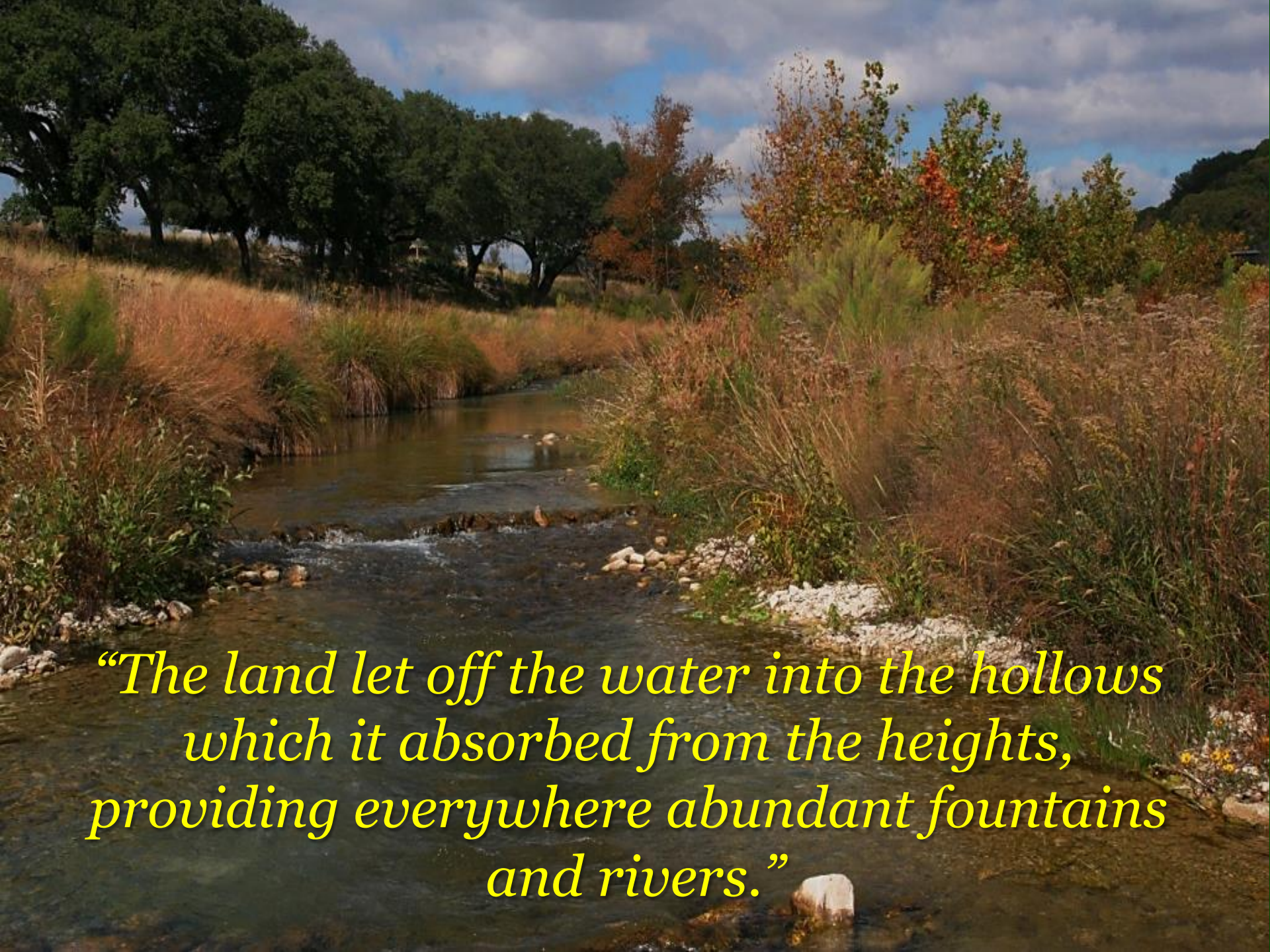






*“The plains were full of rich earth, bearing  
an abundance of food for cattle.  
Moreover, the land reaped the benefit of the  
annual rainfall; receiving the rainfall into  
herself and storing it up in the soil. ”*





*“The land let off the water into the hollows  
which it absorbed from the heights,  
providing everywhere abundant fountains  
and rivers.”*



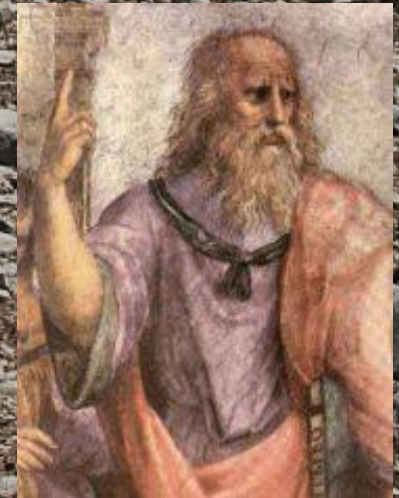


*“Such was the state of the country, which was cultivated by true husbandmen, who made husbandry their business; with a soil the best in the world and an abundance of water.”*

Ancient Greece, prior to 400 BC



*“In comparison of what then was, there now remain only the bones of the wasted body. All the richer and softer parts of the soil have fallen away ... a single night of excessive rain now washes away the earth and lays bare the rock. Now the land is losing the water, which flows off the bare earth into the sea.”*





An aerial photograph of a dry, open landscape. In the center, a small, irregular pond is surrounded by a dense cluster of green and brown shrubs. The surrounding terrain is flat and covered with sparse, dry vegetation. In the far distance, a range of low hills or mountains is visible under a clear, light blue sky.

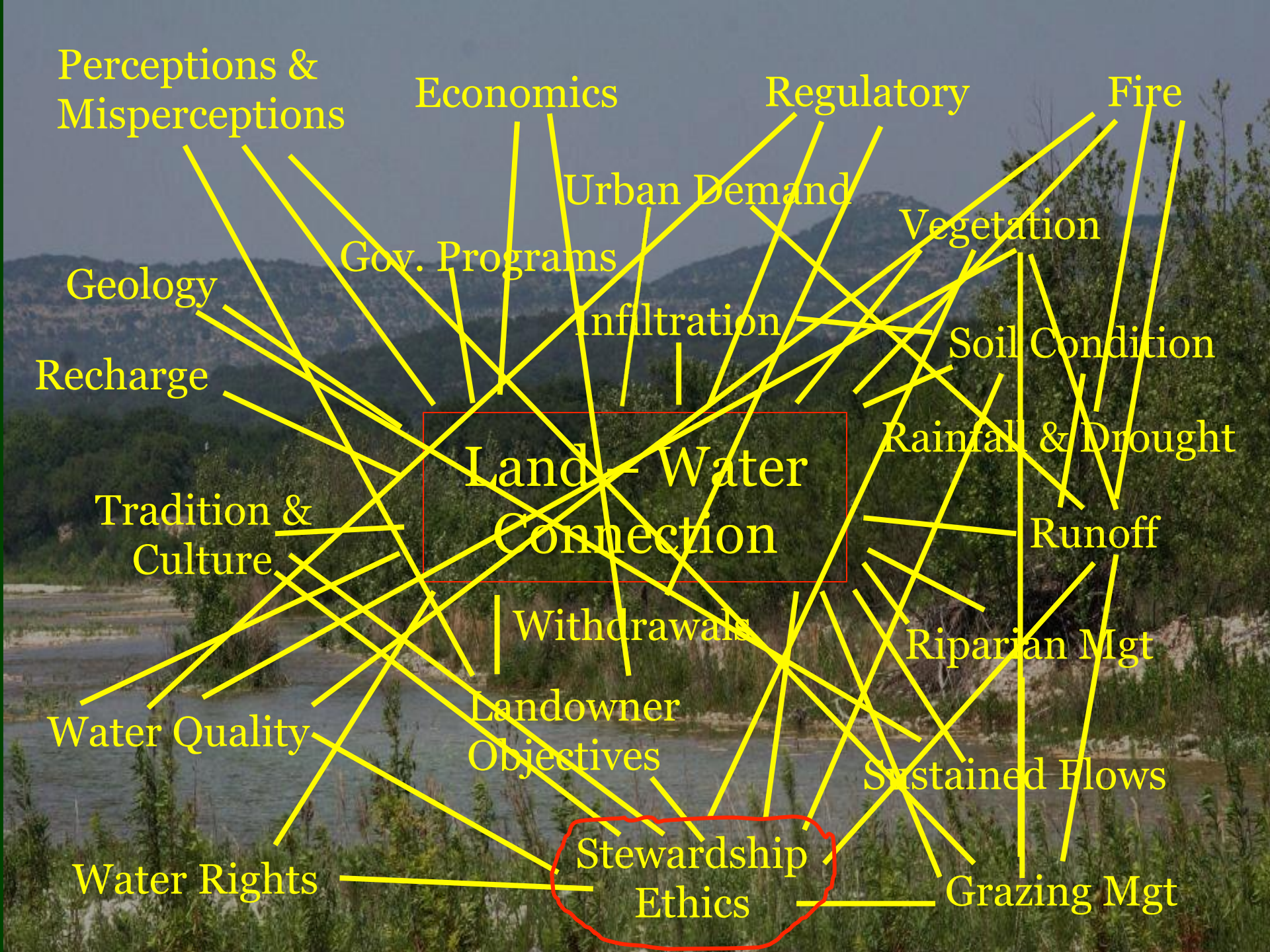
Water Comes From the Land



As the land goes,  
so goes the water









A man wearing a light-colored cowboy hat, a light blue button-down shirt, and blue jeans stands in a field of tall, dry grass. The background shows a sunset or sunrise with a dramatic sky of orange, yellow, and dark clouds. The man is looking slightly to his left.

# Land Stewardship

The Backbone for sustaining the natural resources and  
natural values of Texas





What is Land Stewardship?





Land Stewardship is not a list of practices







*“One cannot work closely  
with the land for very long  
without developing a deep  
respect and appreciation  
for its character and  
capabilities.”*

John “Chip” Merrill  
“Mr. Land Stewardship”

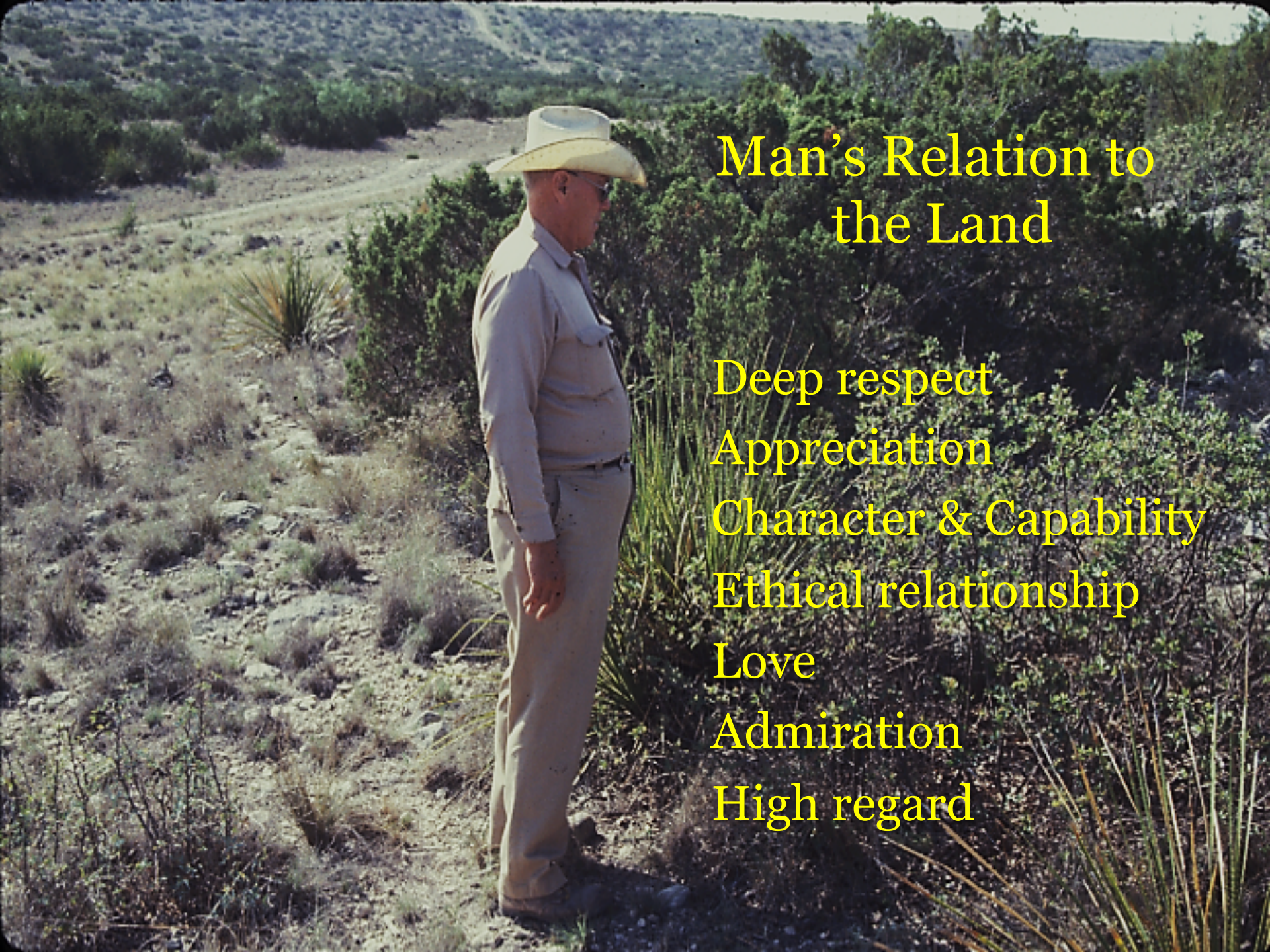




*“It is inconceivable to me that an ethical relation to the land can exist without love, respect, and admiration for land, and a high regard for its value.”*

Aldo Leopold  
1887-1948





## Man's Relation to the Land

Deep respect

Appreciation

Character & Capability

Ethical relationship

Love

Admiration

High regard



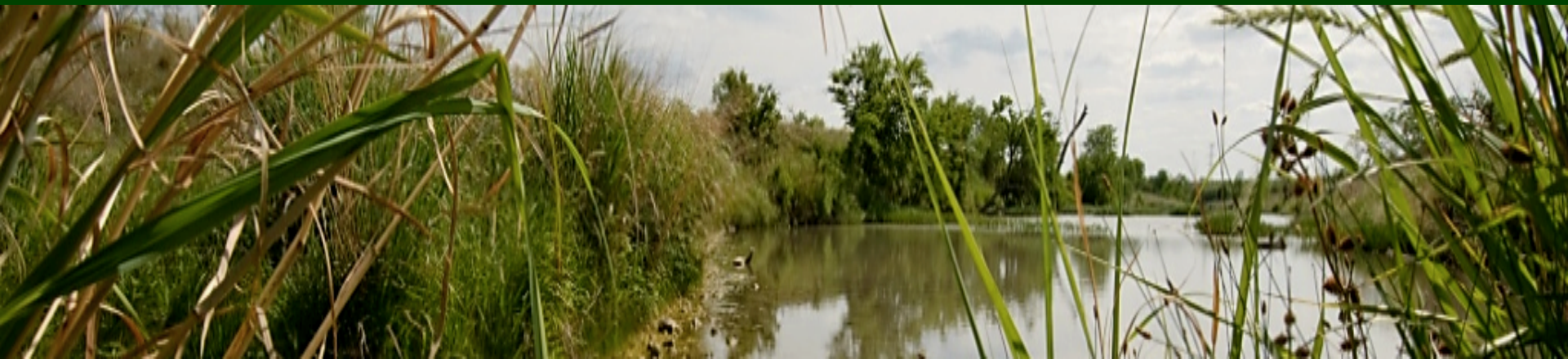




# Land Stewardship:

A deeply held inner conviction that motivates landowners to care for and sustain the land entrusted to them . . .

not only for their own personal benefit, or for the benefit of future generations, but also for the benefits to society





# JX RANCH



## Ranch Stewardship

. . . . we realize that the decisions we make on this ranch have a rippling effect . . .

Our goal is to improve the ecological health of the land, while at the same time making a living for ourselves . . .





We consider ourselves  
tenants and stewards of  
the land, rather than  
owners





“A land ethic reflects the  
existence of an ecological  
conscience,

and this in turn reflects a  
conviction of individual  
responsibility for the  
health of land.”





# Land Stewardship

Knowledge  
Skills & Ability  
Commitment  
Perseverance







# Land – Water Connection







*“Don’t pray for rain if you can’t take  
care of what you get”*  
R. E. Dickson - 1914







**Make the Most of Your Rain**





# Land Stewardship helps process and protect the water of Texas:

- Absorbing the rainfall
- Storing the water
- Releasing the water in moderation
- Prolonging base flows
- Maintaining high quality water



# Properly Functioning Water Cycle





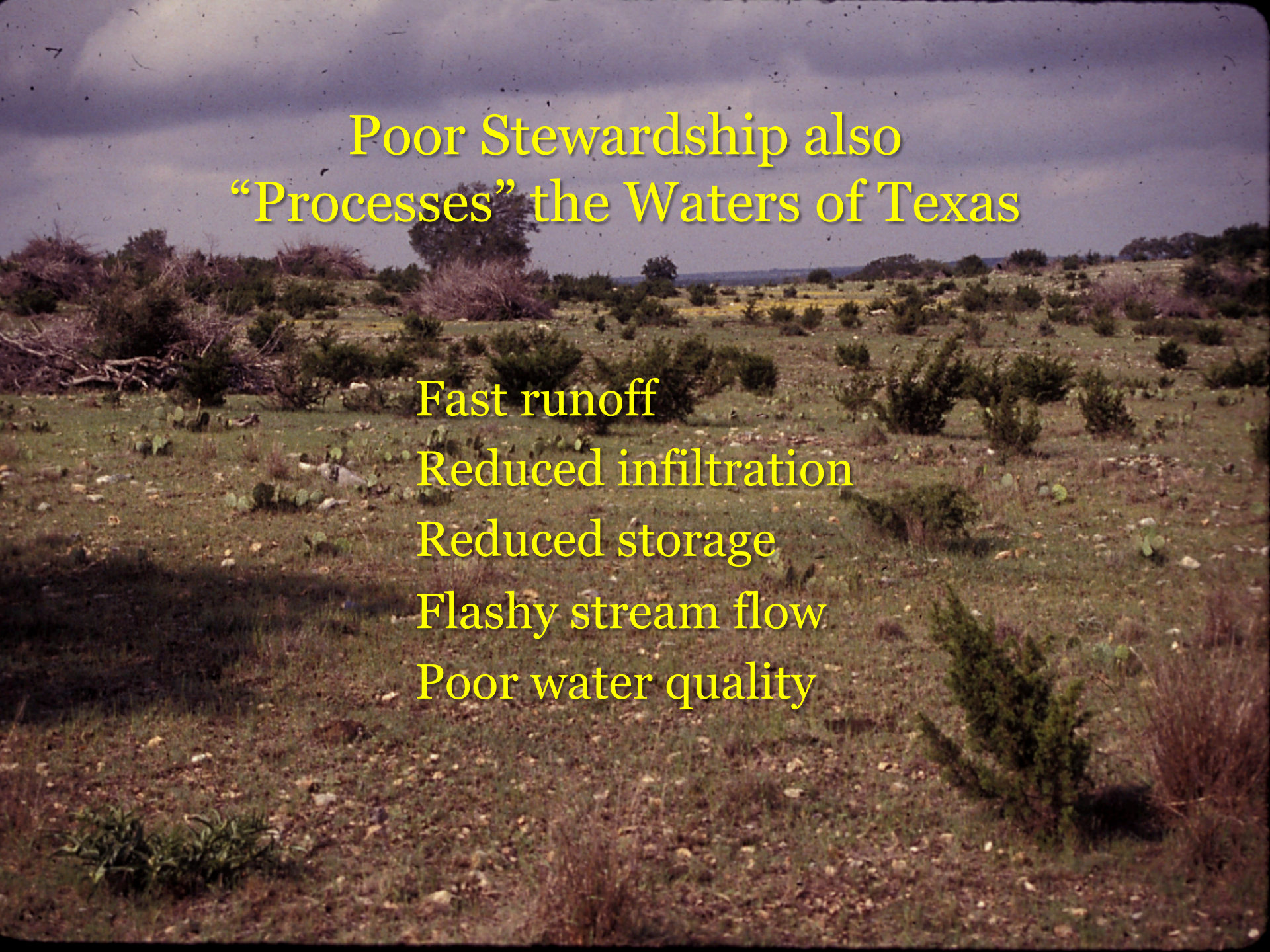
# Properly Functioning Water Cycle









The background image is a photograph of a dry, hilly landscape. The terrain is covered with sparse, low-lying vegetation, including small shrubs and patches of dry grass. In the foreground, there are some larger, darker shrubs and a few small cacti. The hills in the background are also covered in similar vegetation. The sky is overcast with heavy, grey clouds, suggesting an impending storm or late afternoon light. The overall tone of the image is somber and emphasizes the arid nature of the environment.

# Poor Stewardship also “Processes” the Waters of Texas

Fast runoff  
Reduced infiltration  
Reduced storage  
Flashy stream flow  
Poor water quality









Those who do not understand nature  
are destined to deplete it

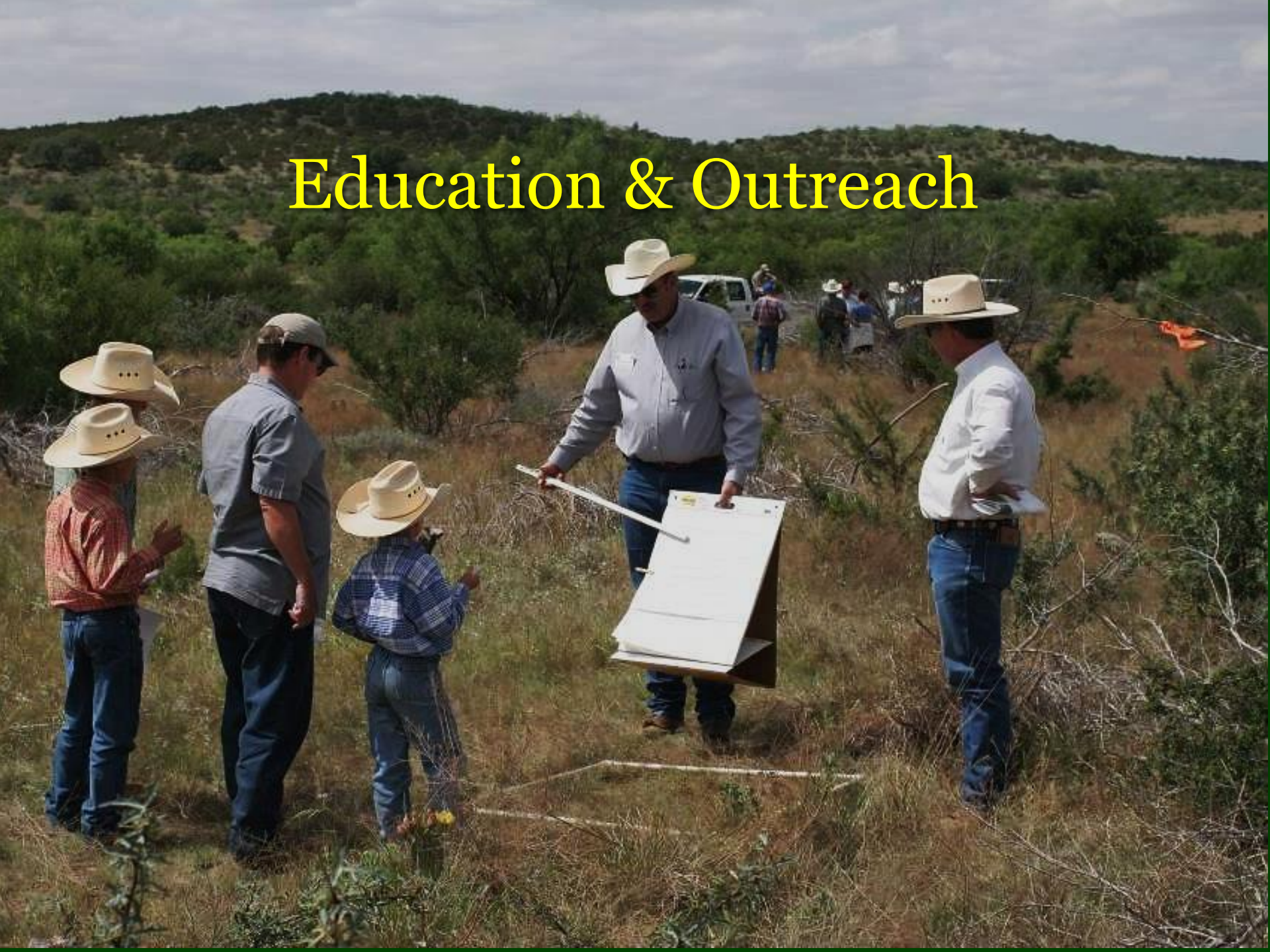




Those who understand nature best  
are compelled to conserve it



# Education & Outreach











# Land – Water Connection









Clean Water  
Sustained Flows  
Sustainable Agriculture  
Fish and Wildlife Habitat  
Natural Beauty  
Recreation





Large tracts  
Native vegetation  
Private ownership  
Good stewardship  
Economically sustainable





To conserve and protect the agricultural lands, wildlife habitat, and watersheds of the Texas Hill Country for present and future generations.





Conservation Easements  
Education & Outreach  
Promoting, Encouraging, Inspiring  
Genuine Land Stewardship





Native Prairies  
Association of Texas

